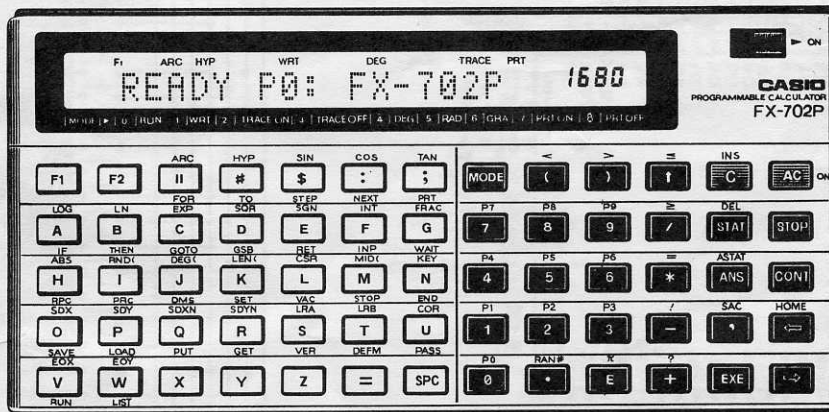


# SERVICE MANUAL

With price

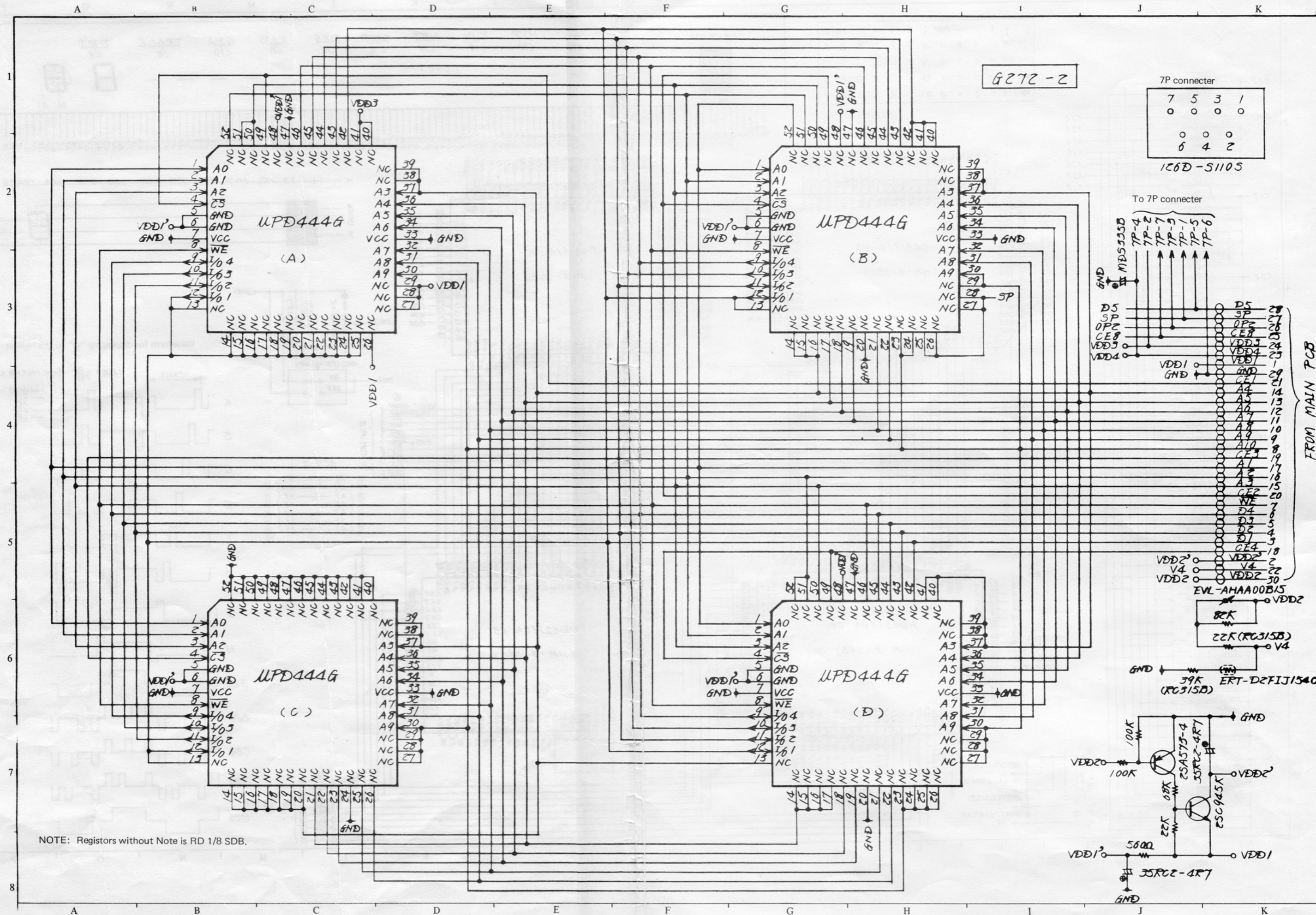
## Fx702p (GX-272AA)

AUG. 1981



# CASIO®





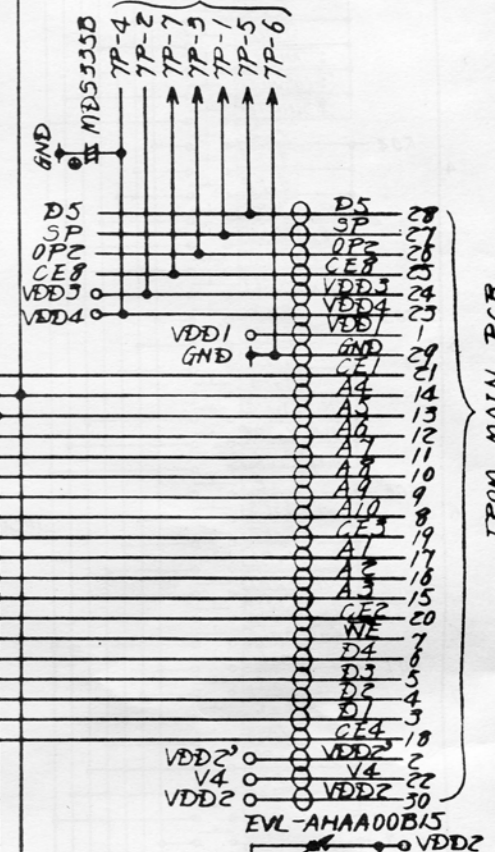
G272-2

7P connector

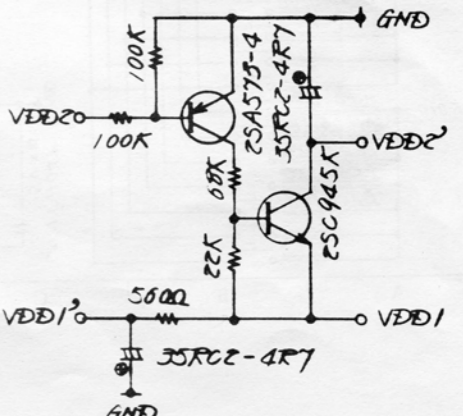
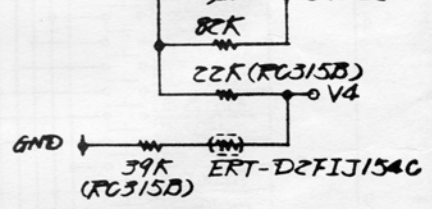
|   |   |   |   |
|---|---|---|---|
| 7 | 5 | 3 | 1 |
| 0 | 0 | 0 | 0 |
| 0 | 0 | 0 | 0 |
| 6 | 4 | 2 |   |

IC6D-51105

To 7P connector



FROM MAIN PCB



NOTE: Registers without Note is RD 1/8 SDB.

## PARTS LIST

Model FX-702P (GX-272AA)

| Code No.  | Parts name                 | Specifications | Price (¥) | Q'ty/Unit | Rank |
|-----------|----------------------------|----------------|-----------|-----------|------|
| 4301 2020 | P.C.B. (without component) | G272-1         | 540       | 1         | ○    |
| 5600 4060 | Heat seal G272             | KZ-10-1        | 14        | 1(10)     | ○    |
| 6329 7450 | Heat seal insulation plate | A45156-1       | 5         | 1(10)     | ○    |
| 6329 7460 | Adhesive tape G302A        | A44931-1       | 2         | 1(10)     | ○    |
| 3330 5320 | LCD                        | AC122223       | 1,020     | 1         | ○    |
| 6329 7470 | LCD holder G272            | A33936-1       | 11        | 1         | ○    |
| 6329 7480 | Insulation plate G272      | A45158-1       | 3         | 1(10)     | ○    |
| 2001 2960 | LSI                        | HD43190A-02    | 1,500     | 1         | ○    |
| 2001 2978 | LSI                        | HD43190A-03    | 1,500     | 1         | ○    |
| 2001 2986 | LSI                        | HD43191A-02    | 1,500     | 1         | ○    |
| 2001 2994 | LSI                        | HD43191A-03    | 1,500     | 1         | ○    |
| 2790 8217 | Chip resistor              | RC315B180K-J   | 4         | 1(10)     |      |
| 2790 8161 | Chip resistor              | RC315B2.2M-J   | 4         | 1(10)     |      |
| 2648 0515 | Carbon film resistor (P)   | RD1/8SDB390-J  | 3         | 1(10)     |      |
| 2890 6943 | Chip capacitor             | C36AF1B104Z    | 10        | 4(10)     |      |
| 2804 9056 | Electrolytic capacitor     | 35RC2-4R7      | 9         | 1(10)     | ○    |
| 2804 9064 | Electrolytic capacitor     | 16RC2-10       | 9         | 1(10)     | ○    |
| 2890 4223 | Tantalum capacitor         | MDS105C        | 15        | 2(10)     |      |
| 2300 3031 | Diode                      | 1S1588         | 4         | 2(10)     |      |
| 2700 2684 | Metal film resistor        | ERO-25-CKF4702 | 6         | 4(10)     | ○    |
| 6329 7490 | Cushion G272               | A45214-1       | 2         | 1(10)     | ○    |
| 4301 2030 | P.C.B. (without component) | G272-2         | 142       | 1         | ○    |
| 2770 9150 | Rotary volume              | EVL-AHAA00BC5  | 70        | 1(10)     | ○    |
| 3500 4092 | Connector                  | 126D-S110S     | 156       | 1(10)     |      |
| 2001 1556 | LSI                        | μPD444G        | 1,140     | 4         |      |
| 2200 6126 | Transistor                 | 2SA573-4       | 18        | 1(10)     |      |
| 2220 2171 | Transistor                 | 2SC945P        | 11        | 1(10)     |      |
| 2648 0574 | Carbon film resistor       | RD1/8SDB100K-J | 3         | 2(10)     |      |
| 2648 0523 | Carbon film resistor       | RD1/8SDB560-J  | 3         | 1(10)     |      |
| 2648 0965 | Carbon film resistor       | RD1/8SDB22K-J  | 3         | 1(10)     | ○    |
| 2648 0582 | Carbon film resistor       | RD1/8SDB68K-J  | 3         | 1(10)     |      |
| 2648 0728 | Carbon film resistor       | RD1/8SDB120K-J | 3         | 1(10)     |      |
| 2648 0701 | Carbon film resistor       | RD1/8SDB220K-J | 3         | 1(10)     |      |
| 2804 9056 | Electrolytic capacitor     | 35RC2-4R7      | 9         | 2(10)     |      |
| 2890 4207 | Tantalum capacitor         | MDS335B        | 15        | 1(10)     |      |
| 6329 7271 | Lower case sub assy        | A21059A-1      | 93        | 1         | ○    |
| 6329 7280 | Battery cover G272         | A33943-1       | 8         | 1(10)     | ○    |
| 6329 7290 | Package cover G272         | A21091-1       | 17        | 1(10)     | ○    |

Remark: Q'ty/unit: ( ) figure shows minimum quantity for order.

○ mark of right side shows new parts.

FROM MAIN PCB

## PARTS LIST

Model FX-702P (GX-272AA)

| Code No.  | Parts name                 | Specifications | Price (¥) | Q'ty/Unit | Rank |
|-----------|----------------------------|----------------|-----------|-----------|------|
| 6328 3830 | Screw (flat) A-G403        | A44793-5       | 2         | 2(50)     |      |
| 6328 9130 | Screw (flat) A-G257        | A44793-7       | 2         | 4(50)     |      |
| 6329 7310 | Connecter cap G272         | A45162-1       | 6         | 1(10)     | ○    |
| 6329 7340 | P.C. joiner G272           | A45157         | 21        |           |      |
| 6329 7350 | Upper case sub assy        | A21061*1       | 237       | 1         | ○    |
| 6329 7370 | Slide knob G272            | A33944-1       | 7         | 1(10)     | ○    |
| 6029 0326 | Switch contact spring 90A  | A4897C-1       | 3         | 1(10)     |      |
| 6329 7380 | Key contact rubber A-G272  | A33920-1       | 77        | 1         | ○    |
| 6329 7390 | Display flame G272         | A45160-1       | 22        | 1(10)     | ○    |
| 5610 2060 | Earth spring               | KC025-020-0080 | 2         | 2(50)     |      |
| 6328 2790 | Screw (flat) C-G321        | A44793-3       | 2         | 9(50)     |      |
| 6329 7410 | Key contact rubber B-272   | A33921-1       | 78        | 1         | ○    |
| 6329-7420 | Window G272                | A33937-1       | 18        | 1(10)     | ○    |
| 6330 3080 | Soft case G272             | A34030-1       | 95        | 1         | ○    |
| 6329 8610 | Heat seal insulation G302A | A43821-3       | 5         | 1(10)     |      |
| 6329 7400 | Key top assy               | A33979*1       | 145       | 1         | ○    |

Remark: Q'ty/unit: ( ) figure shows minimum quantity for order.  
 ○ mark of right side shows new parts.